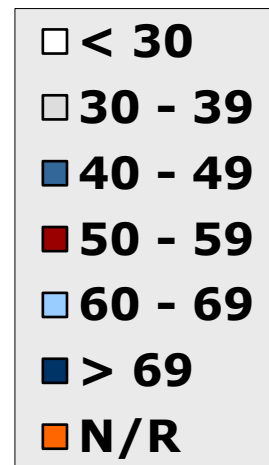
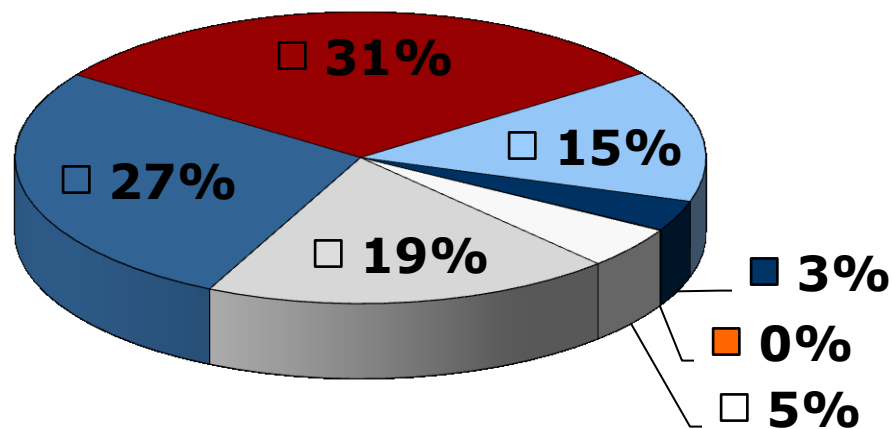
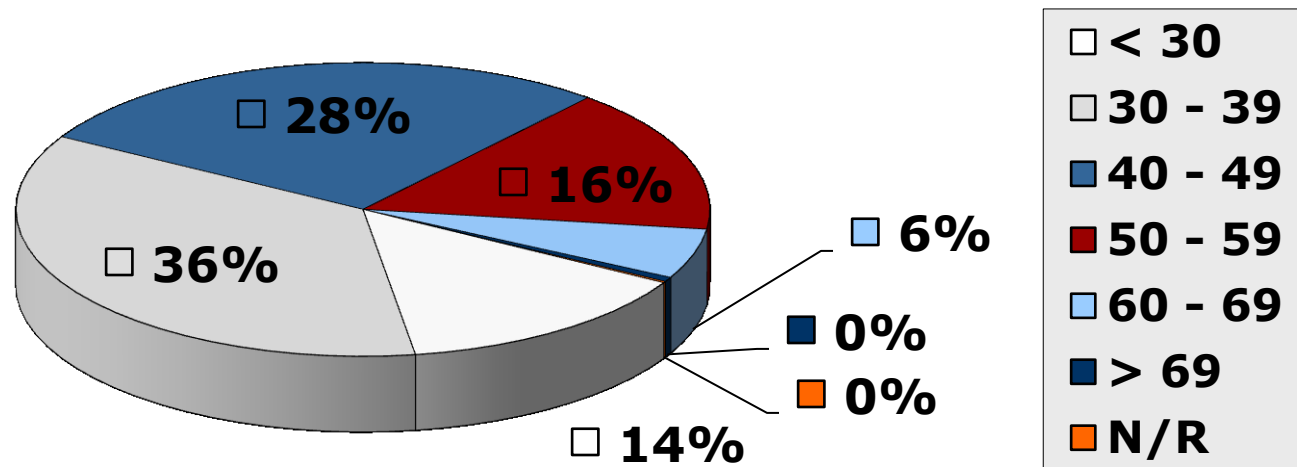


# Age Distribution: Registered Nurses/Midwives



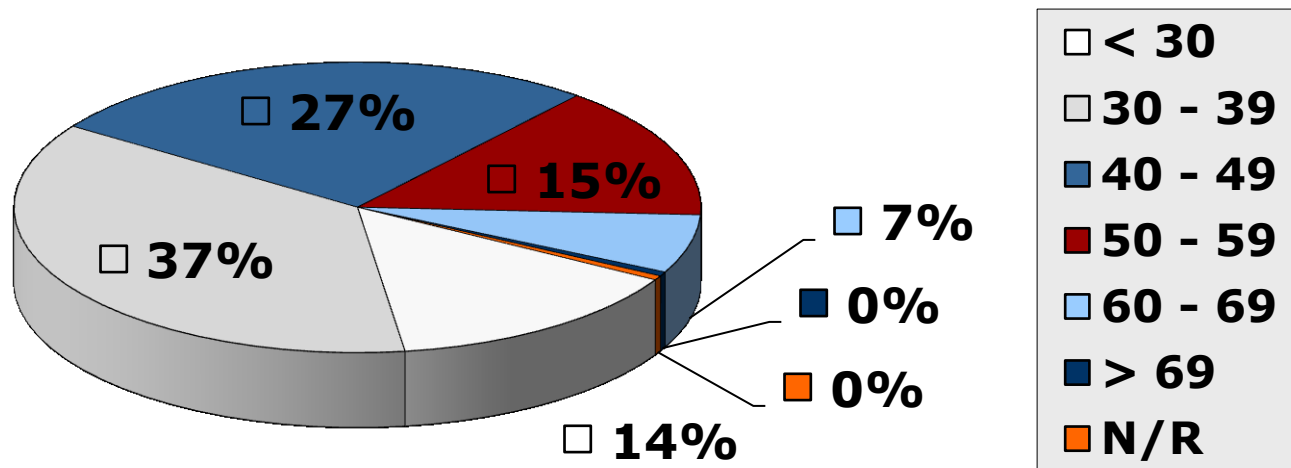
**As at 2015-12-31**

# Age Distribution: Enrolled Nurses/Midwives



**As at 2015-12-31**

# Age Distribution: Enrolled Nursing Auxiliaries



**As at 2015-12-31**

# Age Distribution (table):

## All Nurses (as at 2015-12-31)

Age Group	RN / RM	EN / EM	ENA
< 25	155	980	1182
25 - 29	6166	9039	9149
30 - 34	12292	12484	13024
35 - 39	14025	12589	13160
40 - 44	18223	11153	11055
45 - 49	19346	8516	7957
50 -54	21339	6391	5716
55 - 59	20455	4812	4861
60 - 64	13215	2890	3322
65 - 69	6888	984	1343
> 69	4627	354	342
Not Reported	123	108	351
<b>TOTAL</b>	<b>136854</b>	<b>70300</b>	<b>71462</b>

# Age Analysis: Students

(Who commenced for the first time in 2015)

Course Name	Average Age	Minimum Age	Maximum Age	Count (persons)
4-year N+M	24	17	56	3808
Bridging (Gen.)	35	19	61	4432
Psychiatric N	44	31	58	102
Midwifery	44	25	64	1129
Enrolled (Gen.)	30	13	61	9563
Enrolled (Comm.)	37	19	59	231
Enrolled (Care of Aged)	32	19	45	51
Enrolled (Psy.)	39	30	51	22
Nursing Auxiliary	31	17	59	6625
CHTC (Primary Health)	42	24	65	695
<b>OVERALL</b>	<b>31</b>	<b>13</b>	<b>65</b>	<b>26658</b>

# Age Analysis: Students

(Who completed training in 2015)

Course Name	Average Age	Minimum Age	Maximum Age	Count (persons)
4-year N+M	29	19	60	3289
Bridging (Gen.)	38	22	64	4136
Psychiatric N	47	30	62	111
Midwifery	44	26	63	1154
Enrolled (Gen.)	31	19	64	8447
Enrolled (Care of Aged)	31	23	45	44
Enrolled (Comm.)	37	22	56	183
Enrolled (Psy.)	38	29	54	50
Nursing Auxiliary	31	19	60	5797
CHTC (Primary Health)	42	26	60	249
<b>OVERALL</b>	<b>33</b>	<b>19</b>	<b>64</b>	<b>23460</b>