

# Output Pupil Nurses

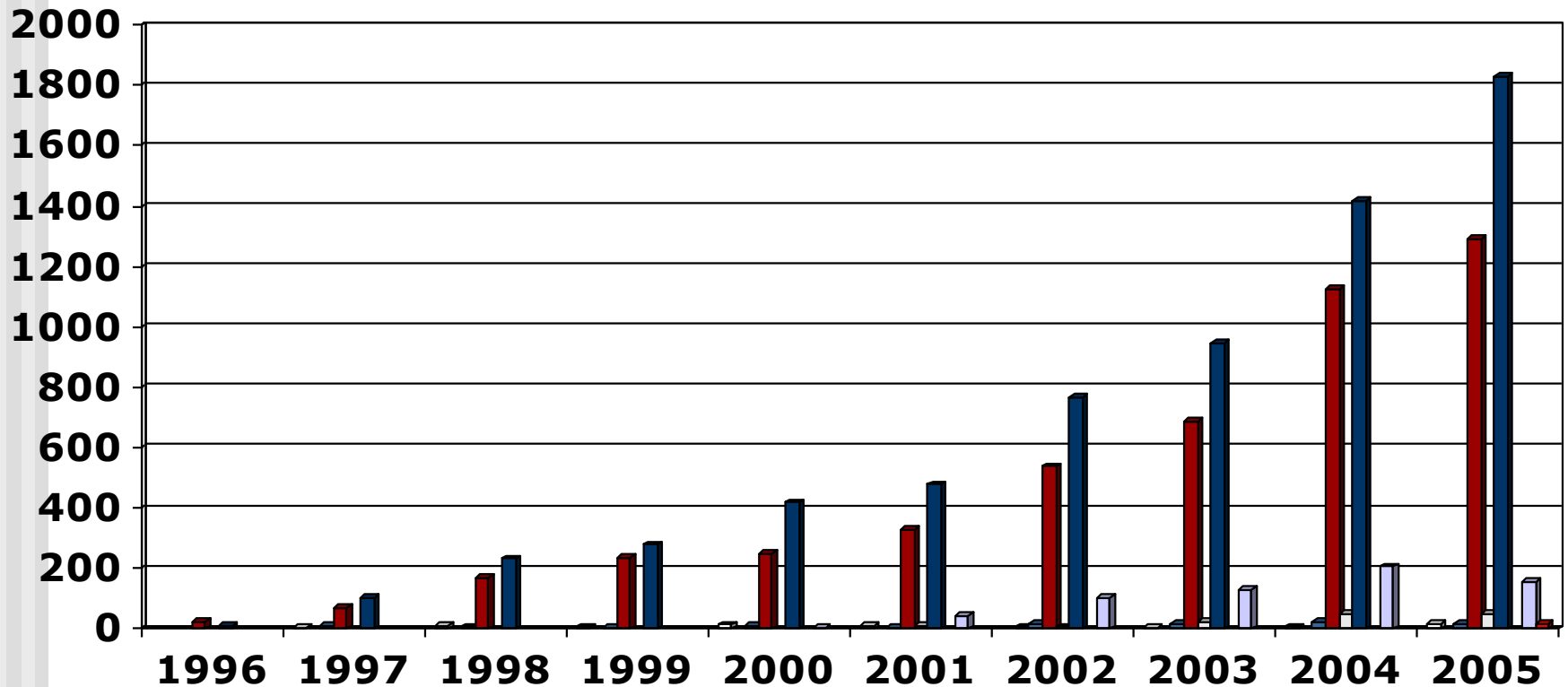
## (1996 - 2005) Overview

---

- These slides show the output of Nursing Education Institutions (Public and Private Institutions) providing the programme leading to enrolment as an Enrolled Nurse for the years 1996 – 2005
- Each slide is presented twice: first all slides are shown without data tables and then the slides are repeated with full data tables
- For further information, please contact:
  - S A Nursing Council:  
P O Box 1123, Pretoria, 0001, Republic of South Africa
  - Phone: (012) 420-1000
  - Fax: (012) 343-5400
  - E-mail: [registrar@sanc.co.za](mailto:registrar@sanc.co.za)
  - Website: [www.sanc.co.za](http://www.sanc.co.za)

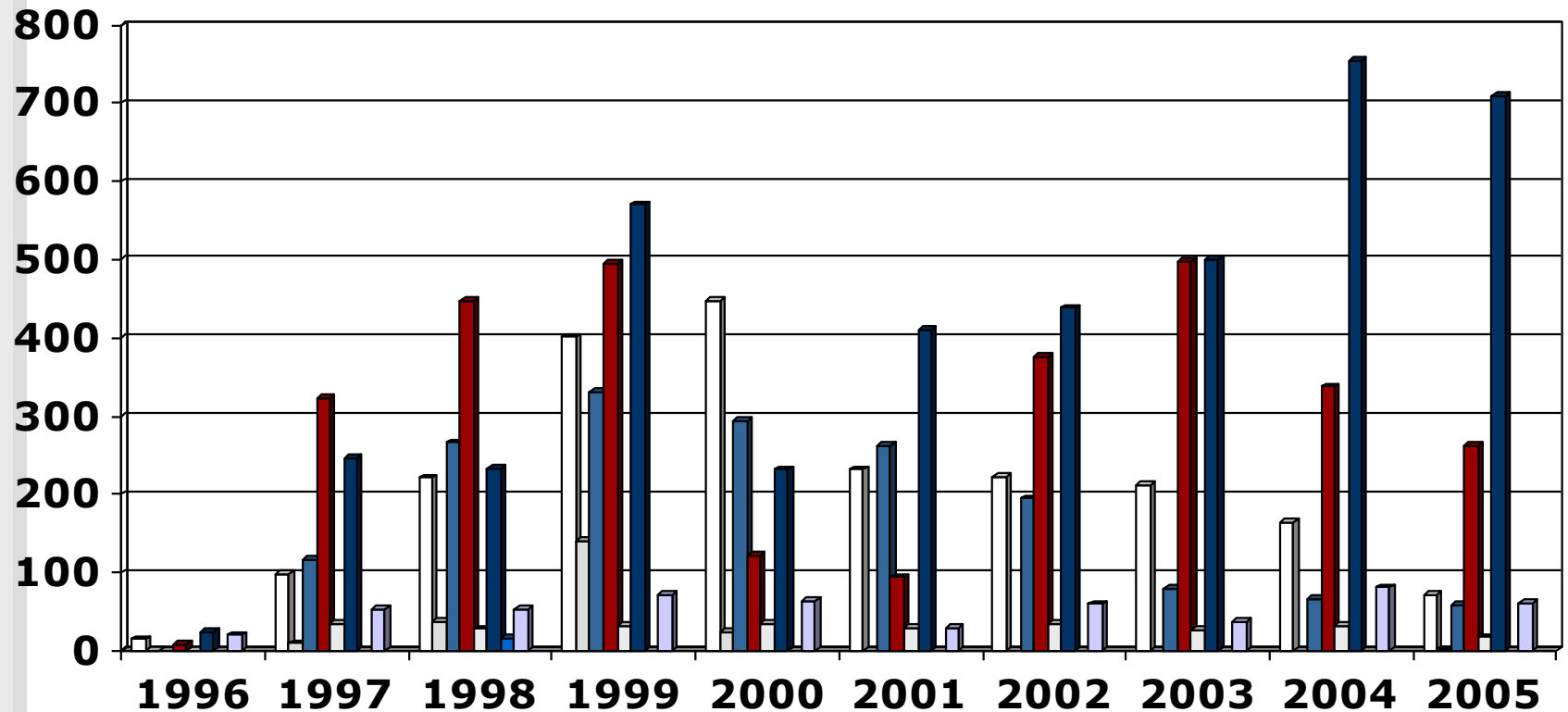
# Output Pupil Nurses

(1996 - 2005) Private Institutions



# Output Pupil Nurses

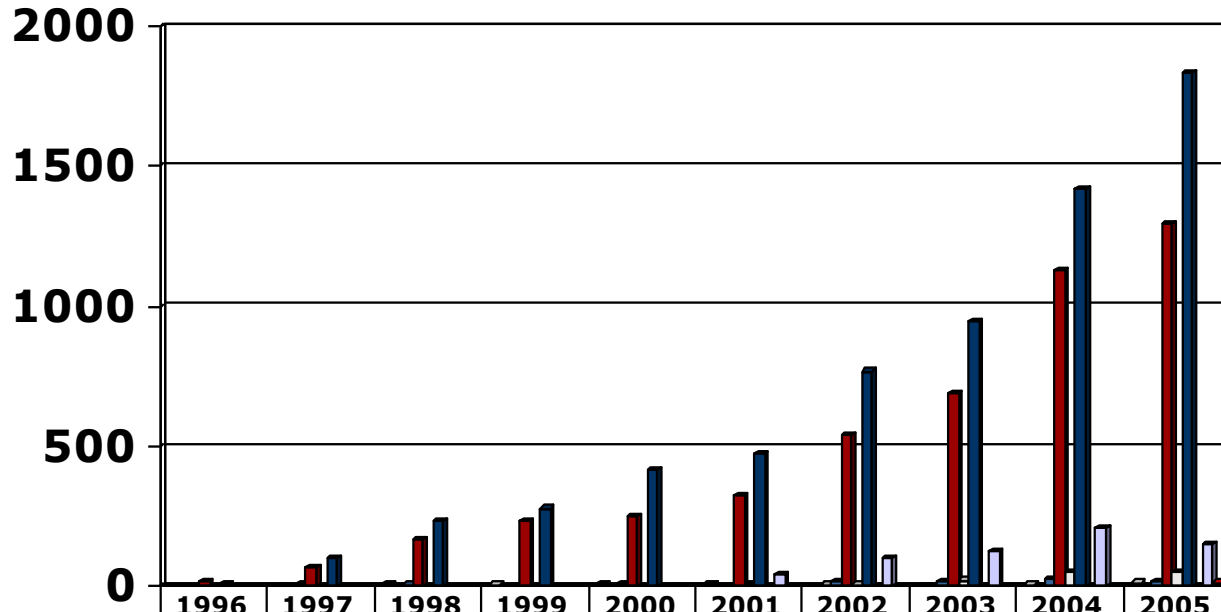
(1996 - 2005) Public Institutions



□ Limpopo      □ North West      ■ Mpumulanga      ■ Gauteng      □ Free State  
■ KwaZulu Natal      ■ Northern Cape      □ Western Cape      ■ Eastern Cape

# Output Pupil Nurses

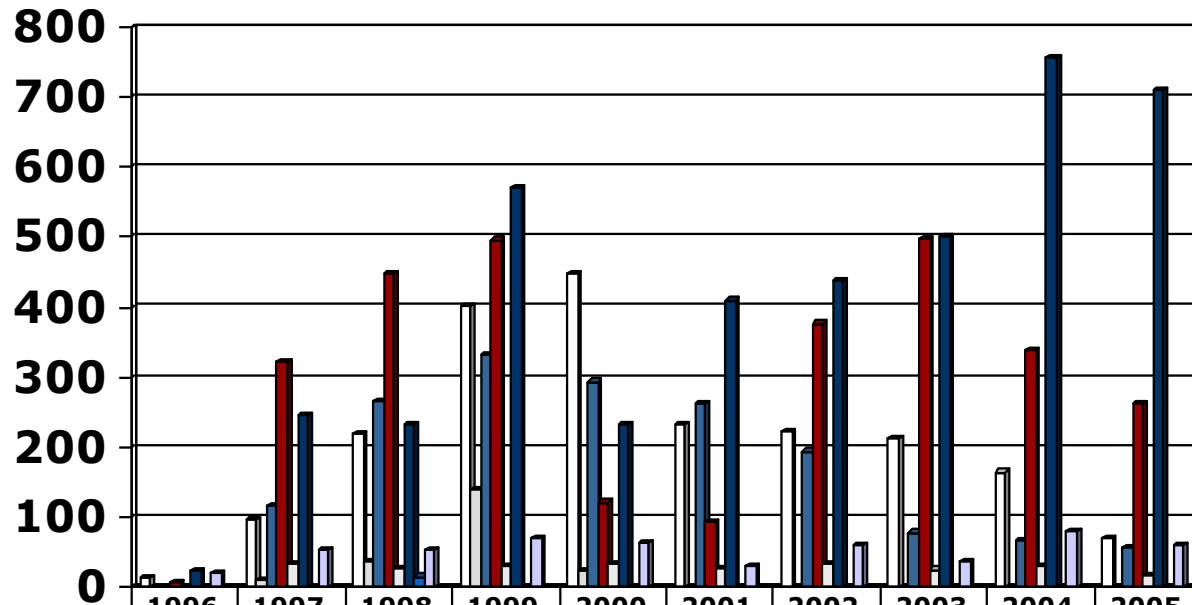
## (1996 - 2005) Private Institutions



	1996	1997	1998	1999	2000	2001	2002	2003	2004	2005
□ Limpopo		4	9	7	15	12		2	7	16
□ North West							8			
■ Mpumulanga		10	8	4	10	2	19	17	25	19
■ Gauteng	23	70	168	235	252	328	538	689	1127	1293
□ Free State						9	7	24	52	51
■ KwaZulu Natal	10	104	233	280	420	478	769	946	1417	1830
■ Northern Cape										
□ Western Cape					5	45	102	128	207	155
■ Eastern Cape										16

# Output Pupil Nurses

## (1996 - 2005) Public Institutions



	1996	1997	1998	1999	2000	2001	2002	2003	2004	2005
□ Limpopo	15	98	221	401	448	232	223	213	165	72
□ North West	1	10	37	140	24					2
■ Mpumulanga		116	266	331	294	263	195	79	67	58
■ Gauteng	8	323	447	496	122	94	377	497	338	262
□ Free State	1	35	28	32	34	29	35	26	32	18
■ KwaZulu Natal	25	246	233	571	232	410	438	500	755	710
■ Northern Cape			16							
□ Western Cape	20	53	54	71	63	30	60	37	81	62
■ Eastern Cape										