

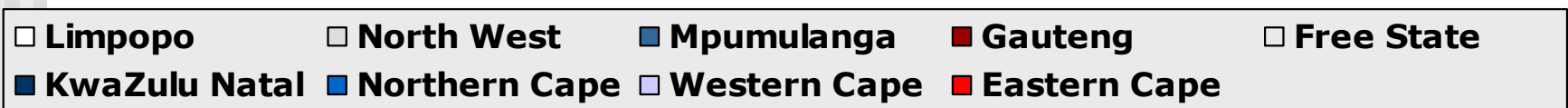
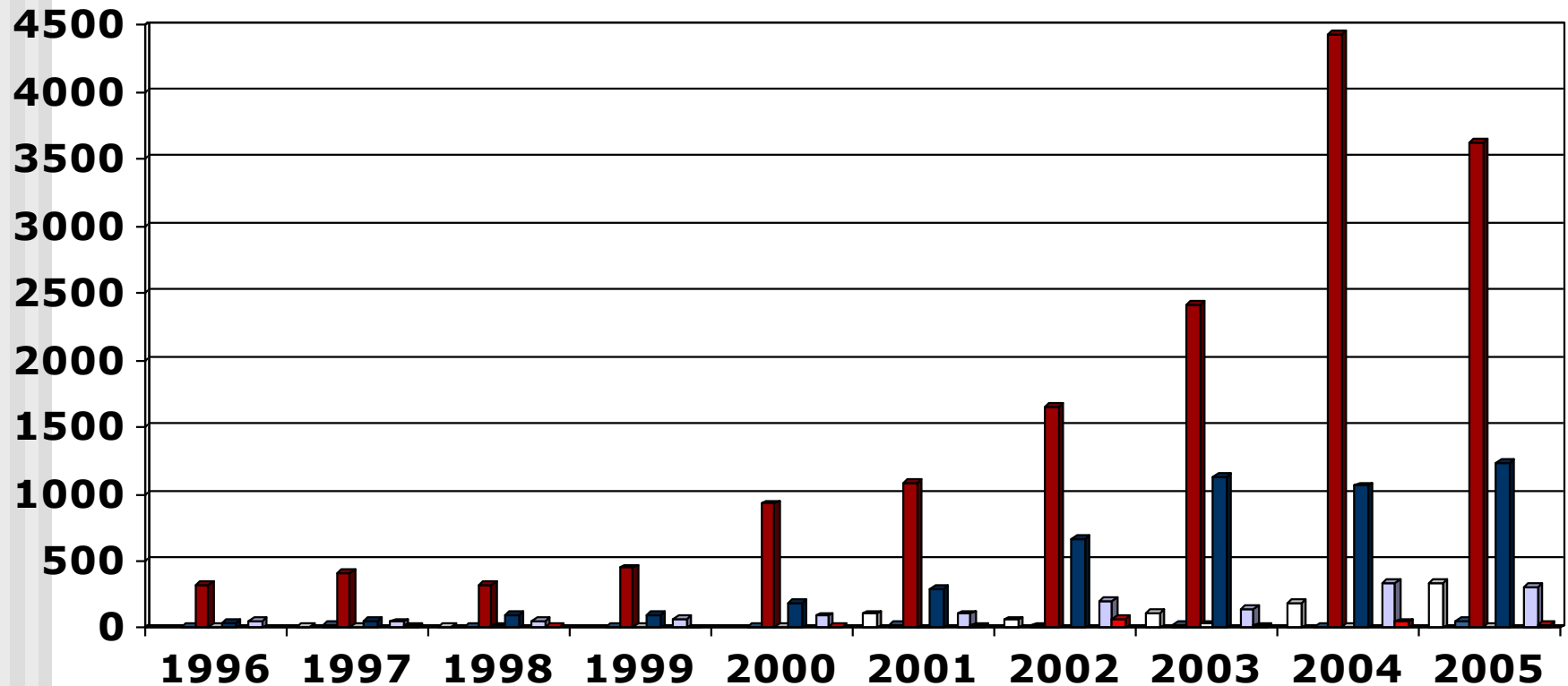
Output Pupil Auxiliaries

(1996 - 2005) Overview

- These slides show the output of Nursing Education Institutions (Public and Private Institutions) providing the programme leading to enrolment as an Enrolled Nursing Auxiliary for the years 1996 – 2005
- Each slide is presented twice: first all slides are shown without data tables and then the slides are repeated with full data tables
- For further information, please contact:
 - S A Nursing Council:
P O Box 1123, Pretoria, 0001, Republic of South Africa
 - Phone: (012) 420-1000
 - Fax: (012) 343-5400
 - E-mail: registrar@sanc.co.za
 - Website: www.sanc.co.za

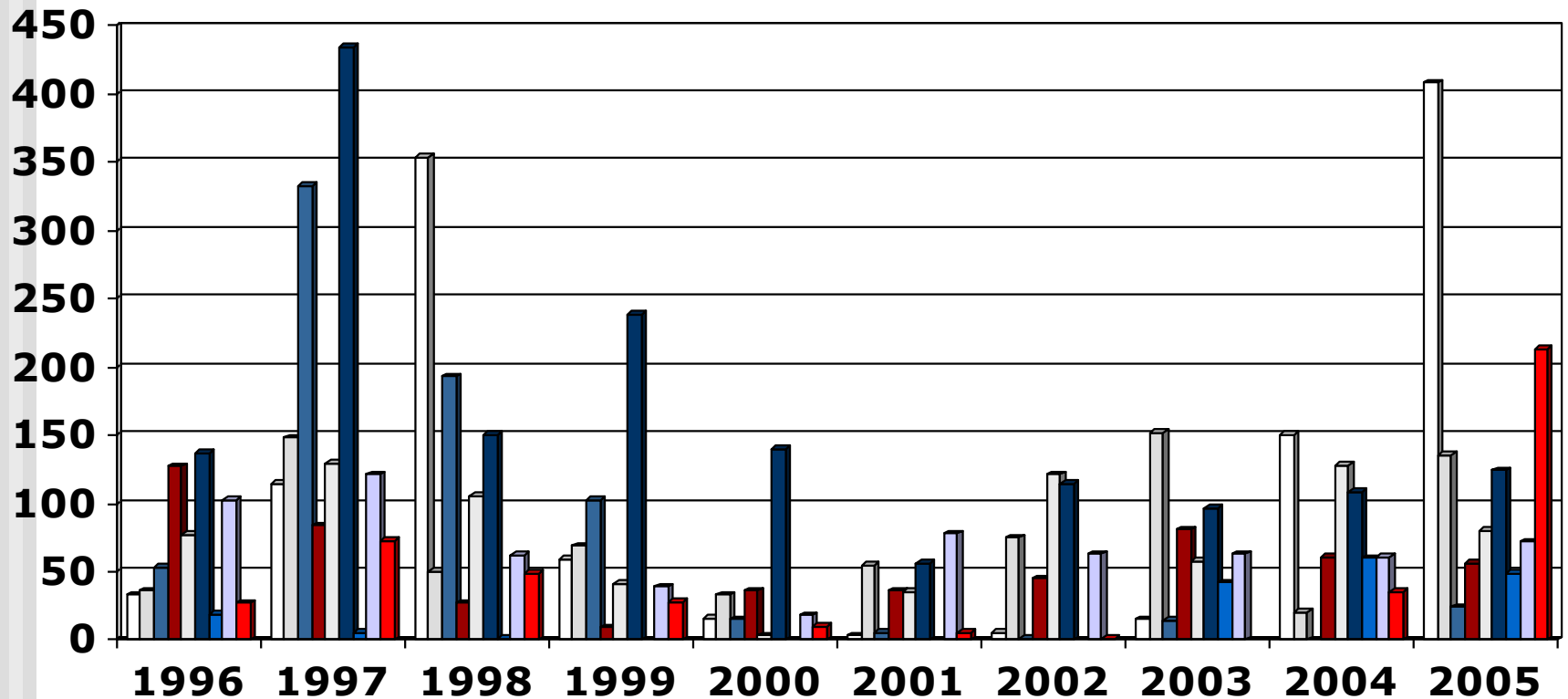
Output Pupil Auxiliaries

(1996 - 2005) Private Institutions



Output Pupil Auxiliaries

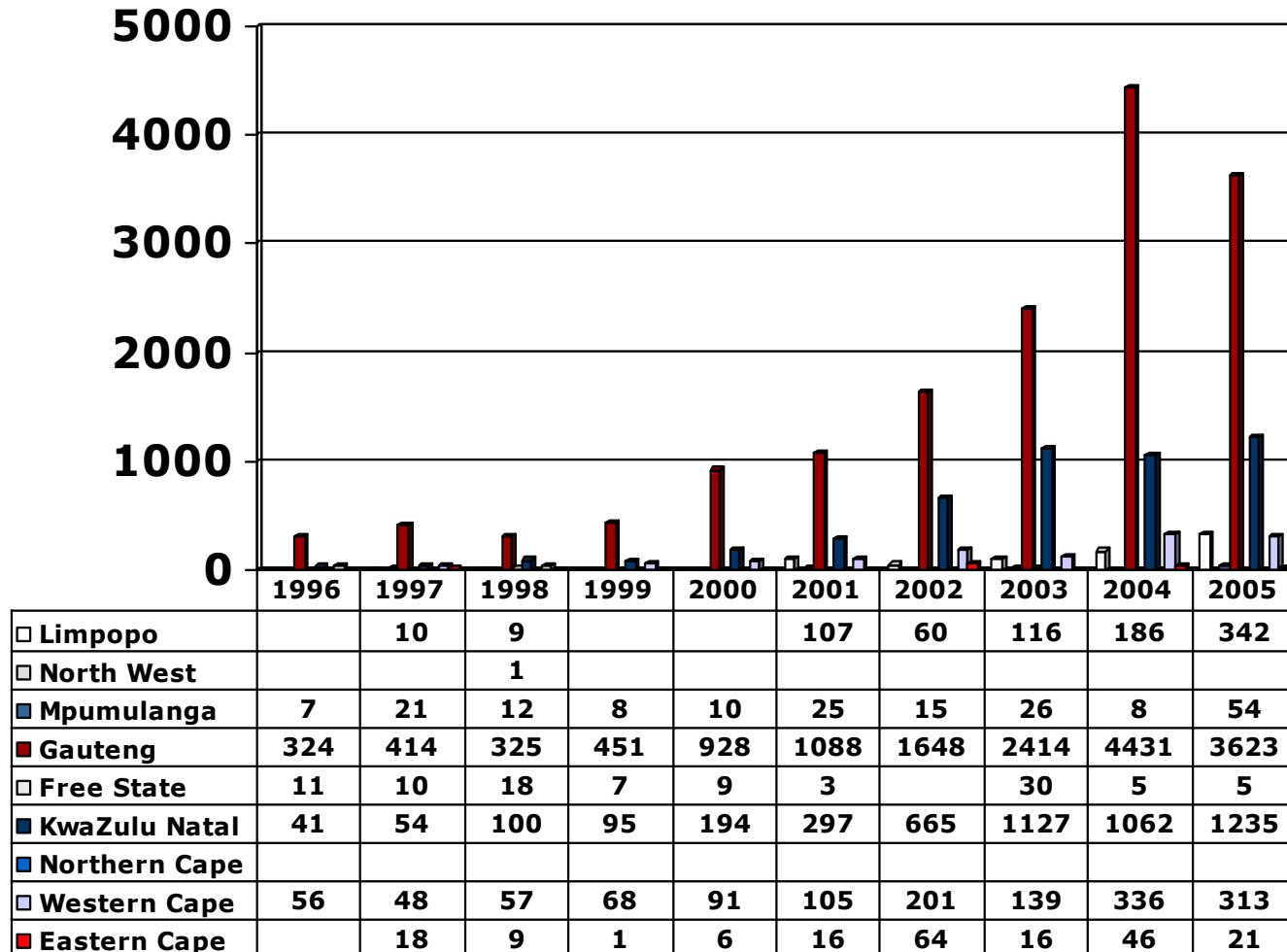
(1996 - 2005) Public Institutions



□ Limpopo □ North West ■ Mpumulanga ■ Gauteng □ Free State
■ KwaZulu Natal ■ Northern Cape ■ Western Cape ■ Eastern Cape

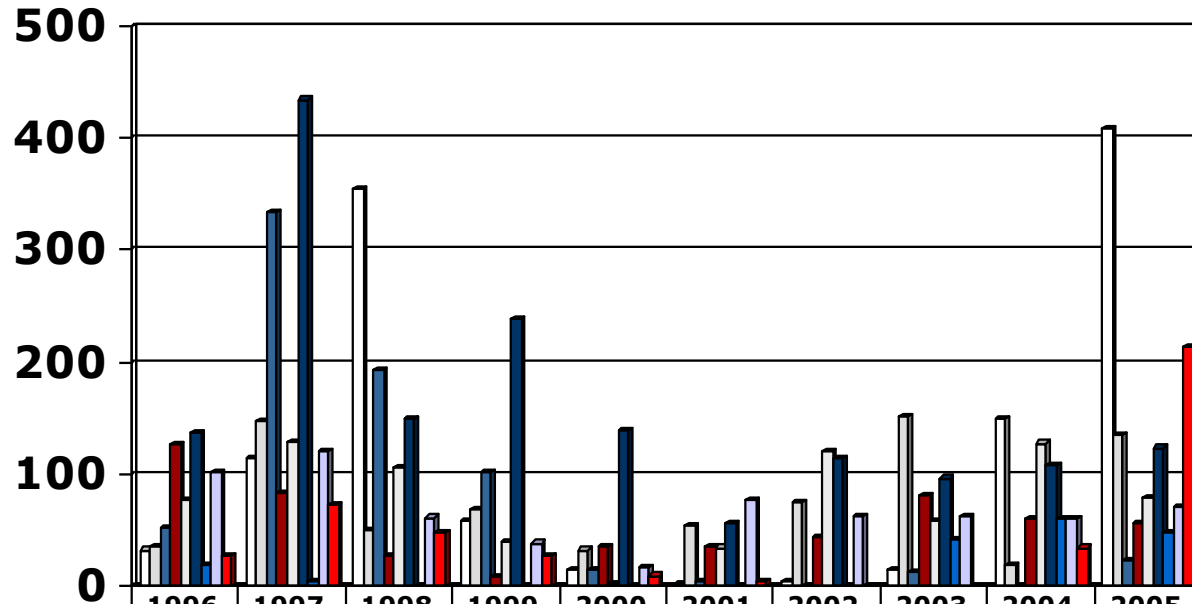
Output Pupil Auxiliaries

(1996 - 2005) Private Institutions



Output Pupil Auxiliaries

(1996 - 2005) Public Institutions



	1996	1997	1998	1999	2000	2001	2002	2003	2004	2005
□ Limpopo	33	115	354	59	16	3	5	15	150	408
□ North West	36	148	50	69	33	55	75	152	20	135
■ Mpumalanga	53	333	193	103	15	5	1	14		24
■ Gauteng	127	84	27	9	36	36	45	81	61	56
□ Free State	77	129	106	41	3	35	121	58	128	80
■ KwaZulu Natal	137	434	150	238	140	56	114	97	109	124
■ Northern Cape	19	5	1					42	60	49
□ Western Cape	103	121	62	39	18	78	63	63	61	72
■ Eastern Cape	27	73	49	28	10	5	1		35	213