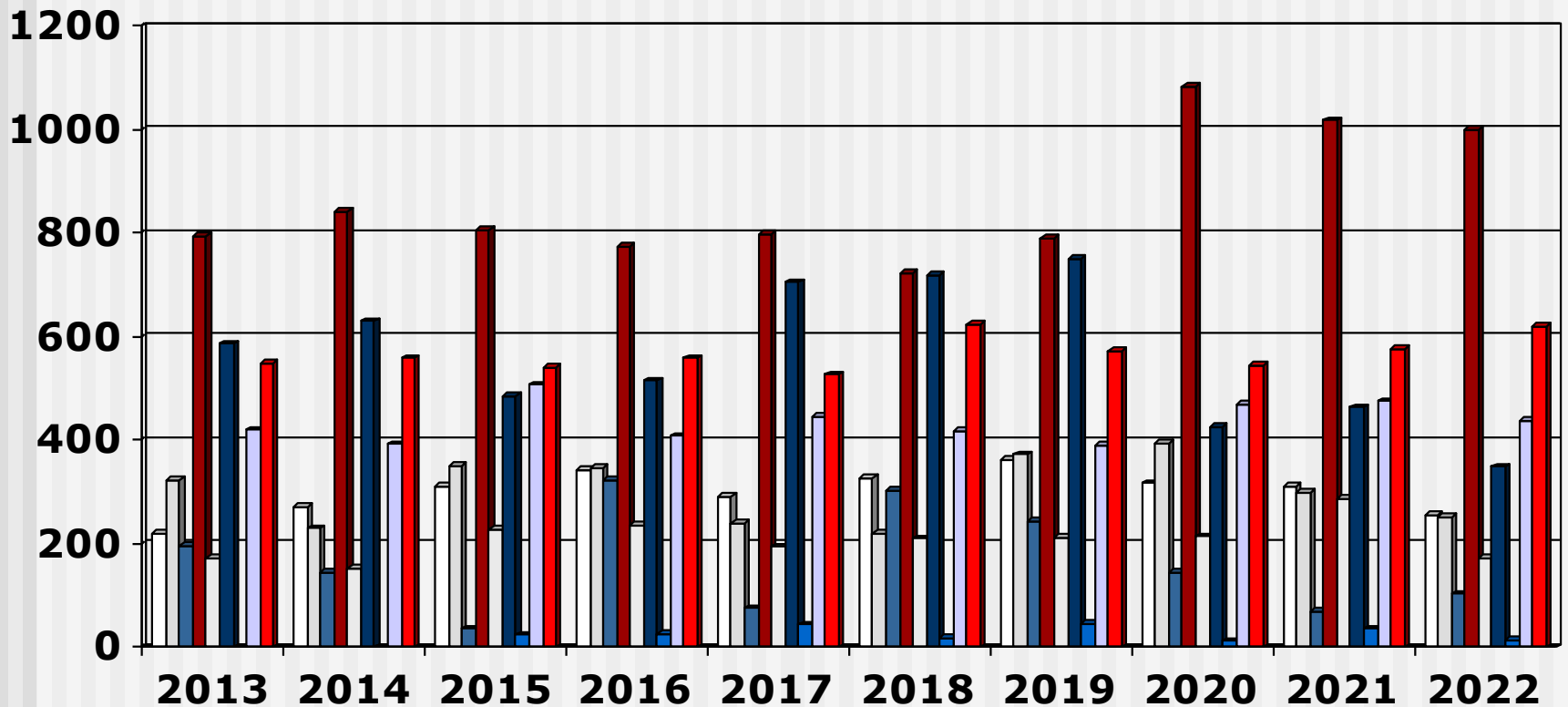


# Output 4-Year Programme (2013 - 2022) Overview

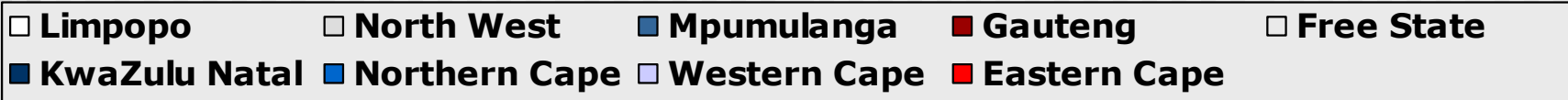
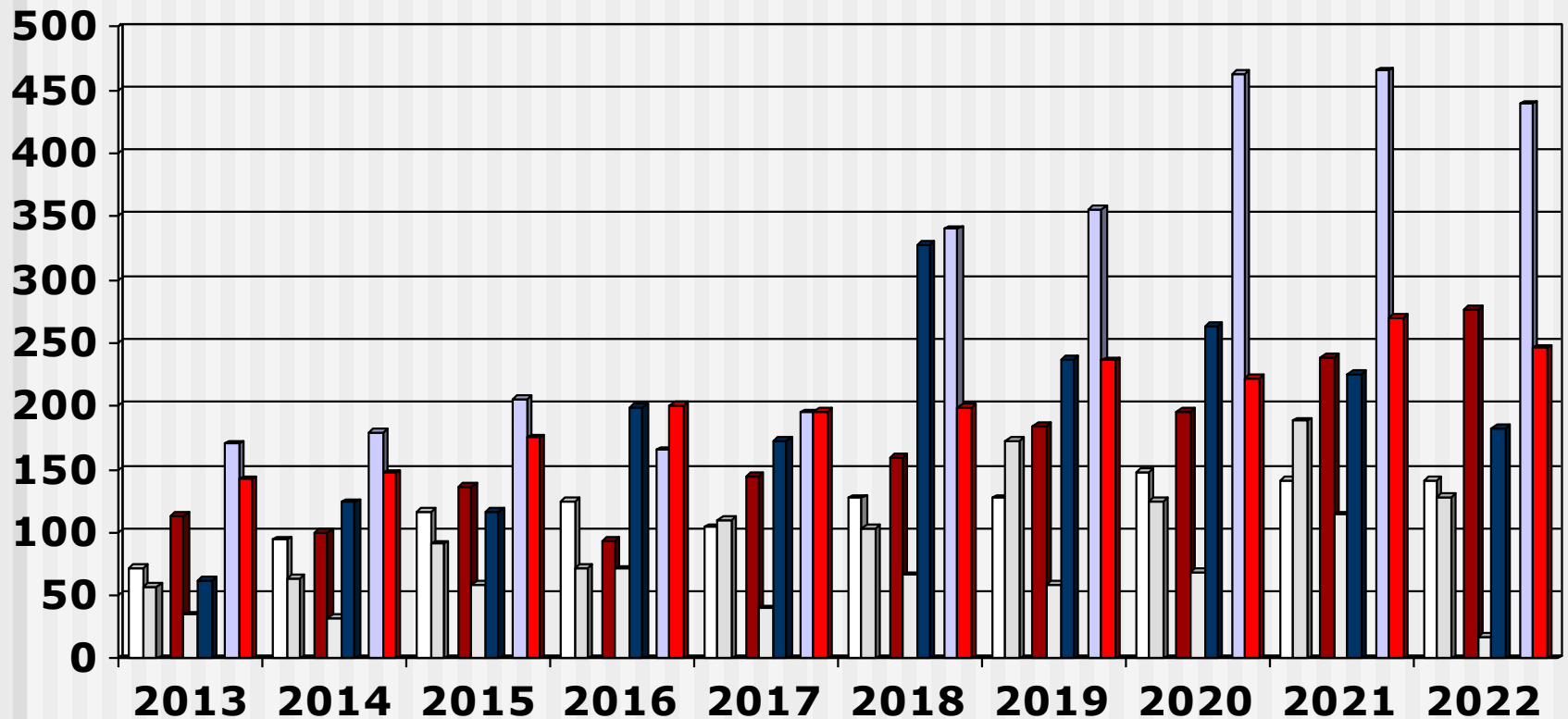
---

- These slides show the output of Nursing Education Institutions (Nursing Colleges and Universities) providing the 4-year programme leading to registration as a Nurse (General, Psychiatric and Community) and Midwife for the years 2013 - 2022
- Each slide is presented twice: first all slides are shown without data tables and then the slides are repeated with full data tables
- You may make use of these slides for education or research purposes, or in your own original works, provided that they are not changed and that the copyright notices are not removed.
- For further information, please contact:
  - S A Nursing Council:  
Private Bag X132, Pretoria, 0001, Republic of South Africa
  - Phone: +27 12 420-1000
  - Fax: +27 12 343-5400
  - E-mail: [customerservice@sanc.co.za](mailto:customerservice@sanc.co.za)
  - Website: [www.sanc.co.za](http://www.sanc.co.za)

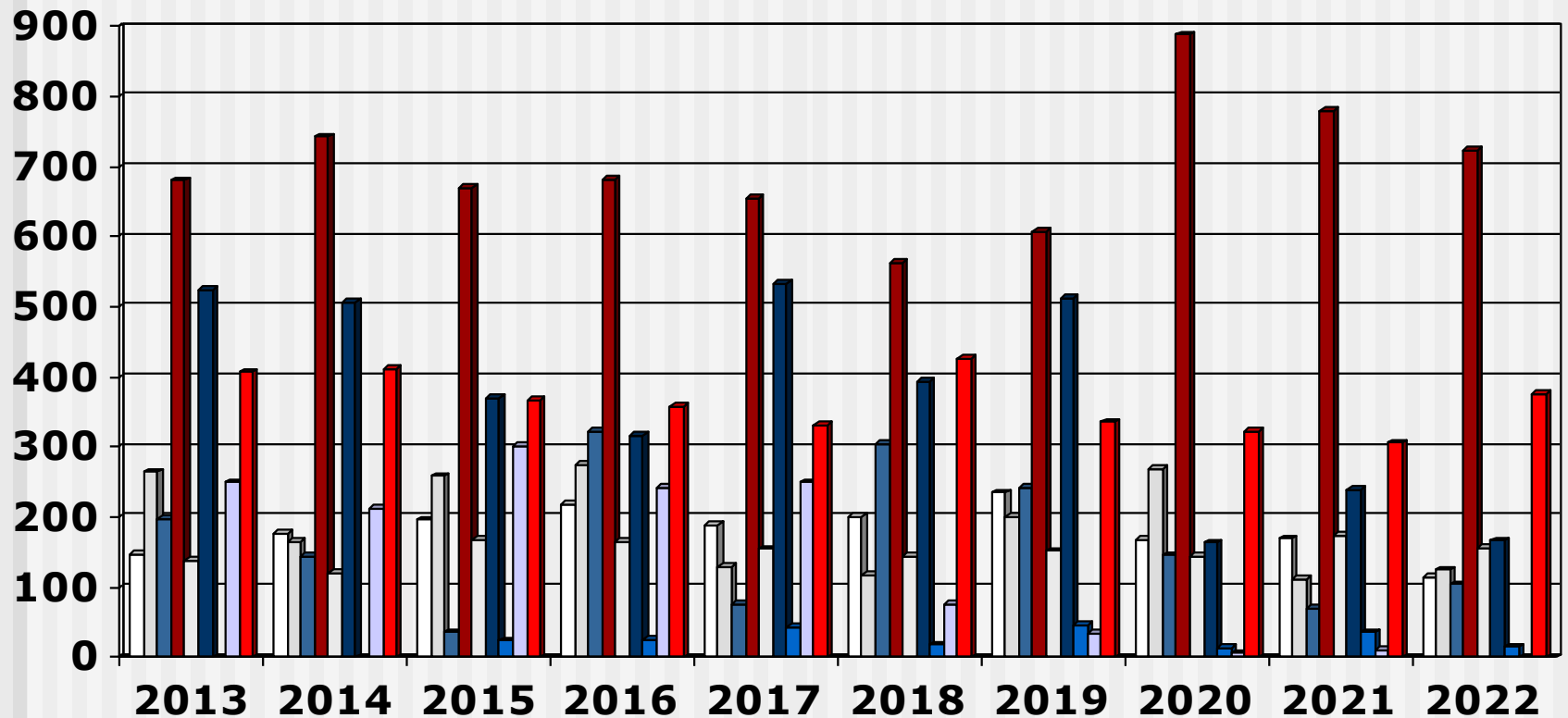
# Output 4-Year Programme (2013 - 2022) All Institutions



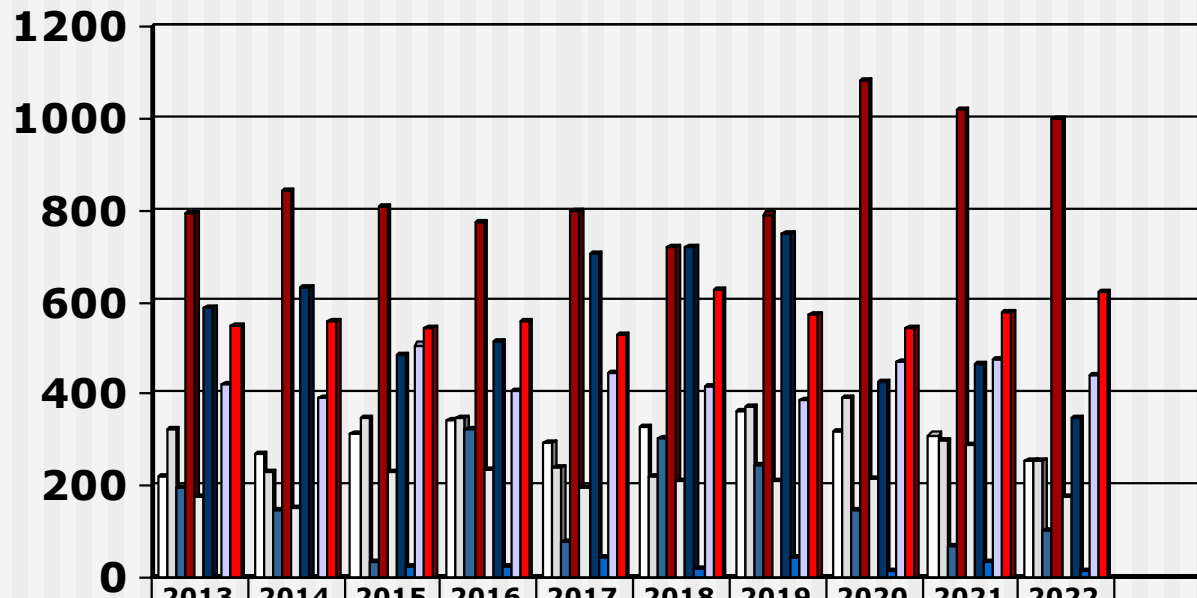
# Output 4-Year Programme (2013 - 2022) Universities



# Output 4-Year Programme (2013 - 2022) Nursing Colleges

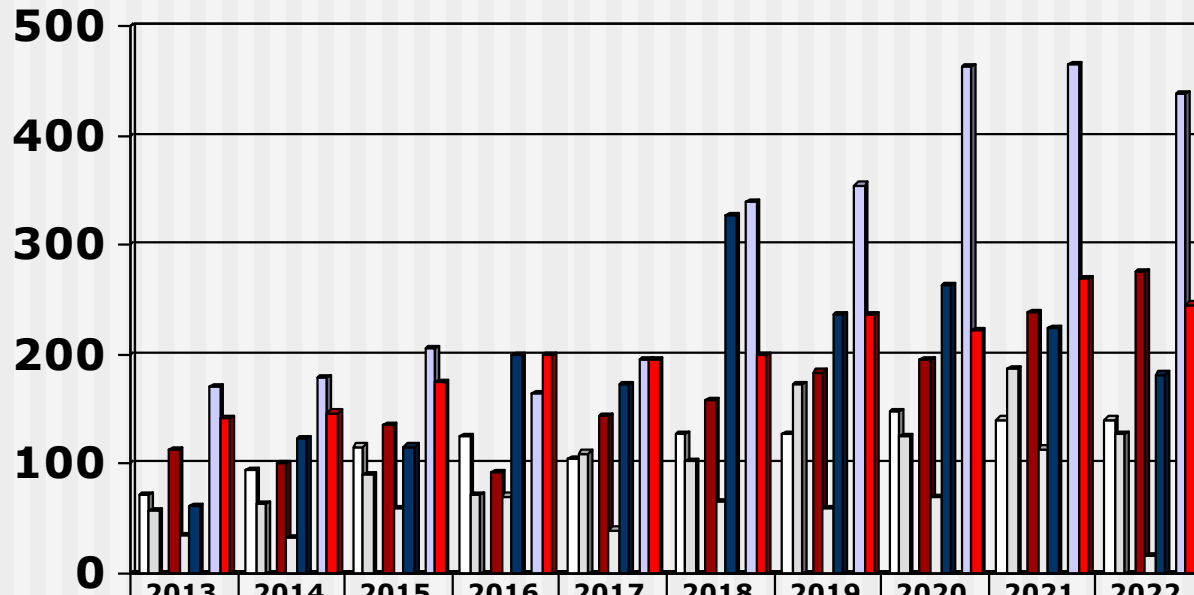


# Output 4-Year Programme (2013 - 2022) All Institutions



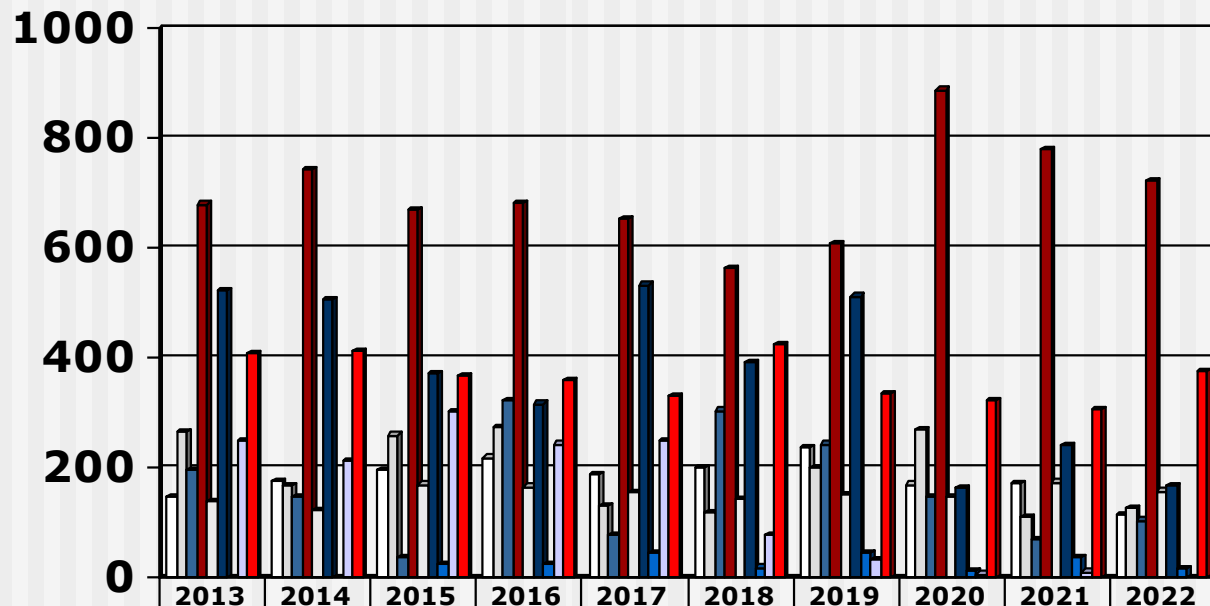
	2013	2014	2015	2016	2017	2018	2019	2020	2021	2022
□ Limpopo	220	271	312	343	292	327	362	317	311	255
□ North West	322	230	350	347	240	221	373	394	299	253
■ Mpumalanga	197	145	36	322	76	304	243	146	70	104
■ Gauteng	793	842	806	774	798	722	791	1084	1017	999
□ Free State	174	153	228	236	195	210	211	214	287	174
■ KwaZulu Natal	586	630	486	515	705	720	749	427	464	349
■ Northern Cape	0	0	24	25	44	18	46	13	36	15
□ Western Cape	420	392	507	408	445	417	389	469	475	439
■ Eastern Cape	549	558	542	558	527	625	572	544	576	621

# Output 4-Year Programme (2013 - 2022) Universities



	2013	2014	2015	2016	2017	2018	2019	2020	2021	2022
□ Limpopo	72	94	116	125	104	127	127	148	141	141
□ North West	57	64	91	72	110	103	173	125	188	128
■ Mpumulanga										
■ Gauteng	113	100	136	93	144	159	184	196	238	276
□ Free State	35	32	59	71	40	66	59	69	114	17
■ KwaZulu Natal	62	124	116	199	172	327	237	263	225	182
■ Northern Cape										
□ Western Cape	170	179	206	165	195	340	355	463	465	439
■ Eastern Cape	142	147	175	200	196	199	236	222	270	246

# Output 4-Year Programme (2013 - 2022) Nursing Colleges



	2013	2014	2015	2016	2017	2018	2019	2020	2021	2022
□ Limpopo	148	177	196	218	188	200	235	169	170	114
□ North West	265	166	259	275	130	118	200	269	111	125
■ Mpumalanga	197	145	36	322	76	304	243	146	70	104
■ Gauteng	680	742	670	681	654	563	607	888	779	723
□ Free State	139	121	169	165	155	144	152	145	173	157
■ KwaZulu Natal	524	506	370	316	533	393	512	164	239	167
■ Northern Cape			24	25	44	18	46	13	36	15
□ Western Cape	250	213	301	243	250	77	34	6	10	
■ Eastern Cape	407	411	367	358	331	426	336	322	306	375