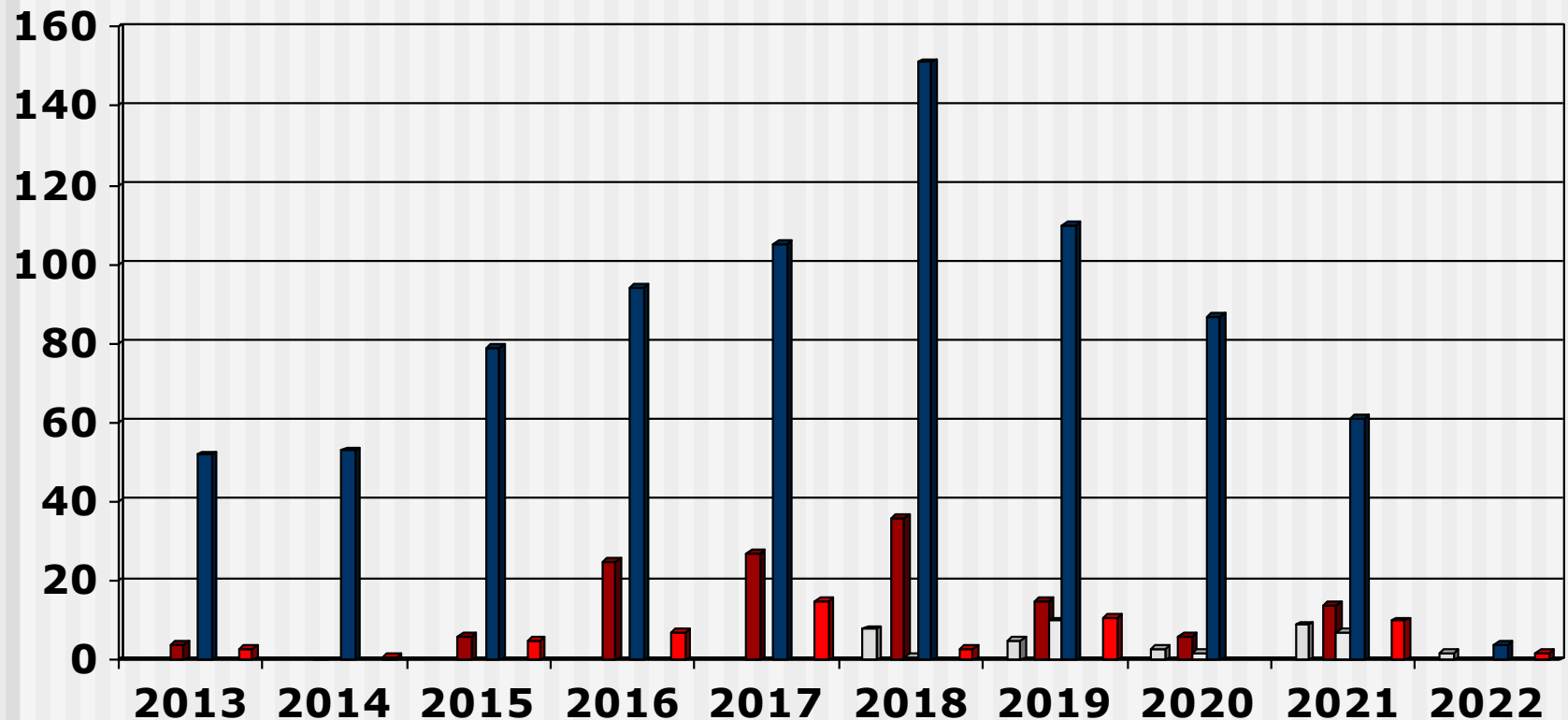


Output Midwifery Programme (2013 - 2022) Overview

- These slides show the output of Nursing Education Institutions (Public and Private Institutions) providing the programme leading to registration as a Midwife for the years 2013 - 2022
- Each slide is presented twice: first all slides are shown without data tables and then the slides are repeated with full data tables
- You may make use of these slides for education or research purposes, or in your own original works, provided that they are not changed and that the copyright notices are not removed.
- For further information, please contact:
 - S A Nursing Council:
Private Bag X132, Pretoria, 0001, Republic of South Africa
 - Phone: +27 12 420-1000
 - Fax: +27 12 343-5400
 - E-mail: customerservice@sanc.co.za
 - Website: www.sanc.co.za

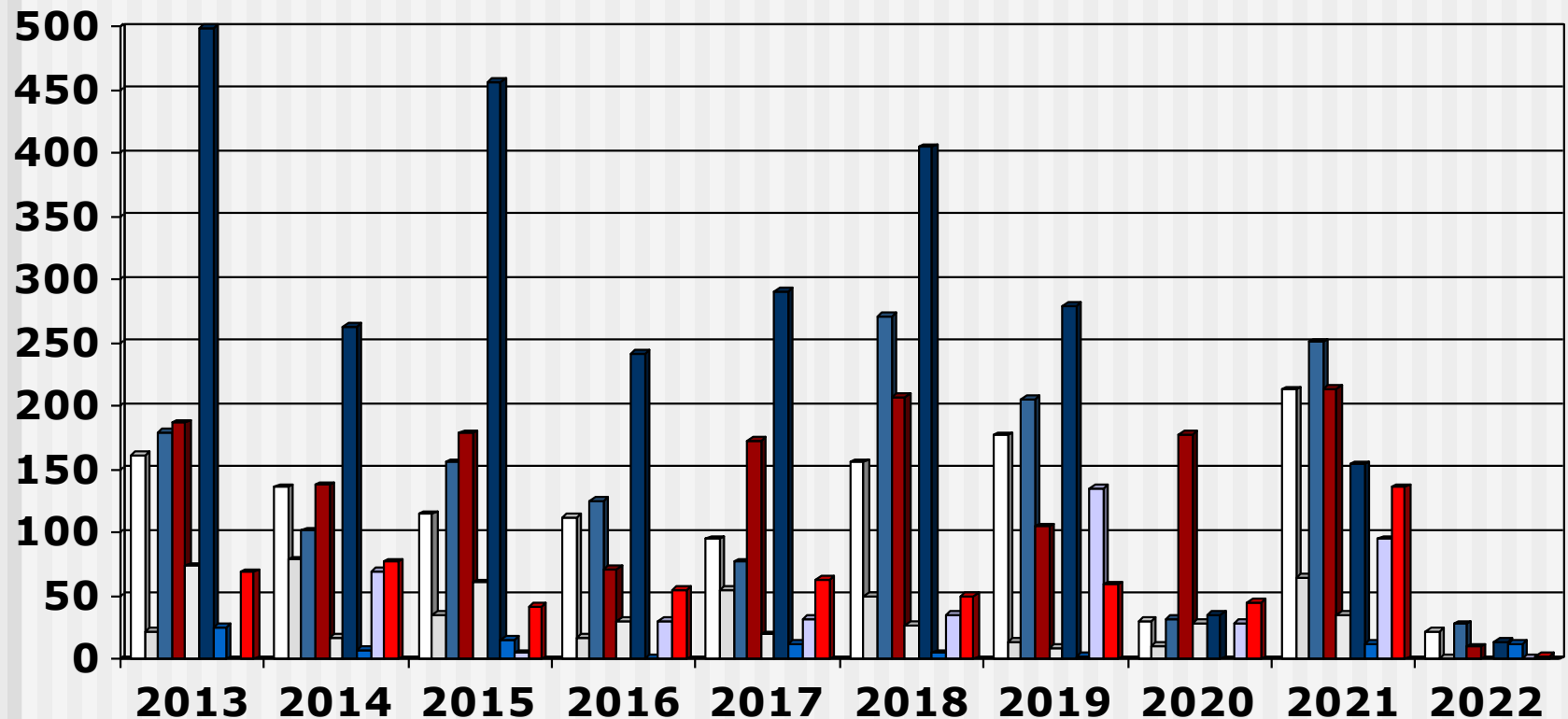
Output Midwifery Programme (2013 - 2022) Private Institutions



Limpopo
 North West
 Mpumulanga
 Gauteng
 Free State

KwaZulu Natal
 Northern Cape
 Western Cape
 Eastern Cape

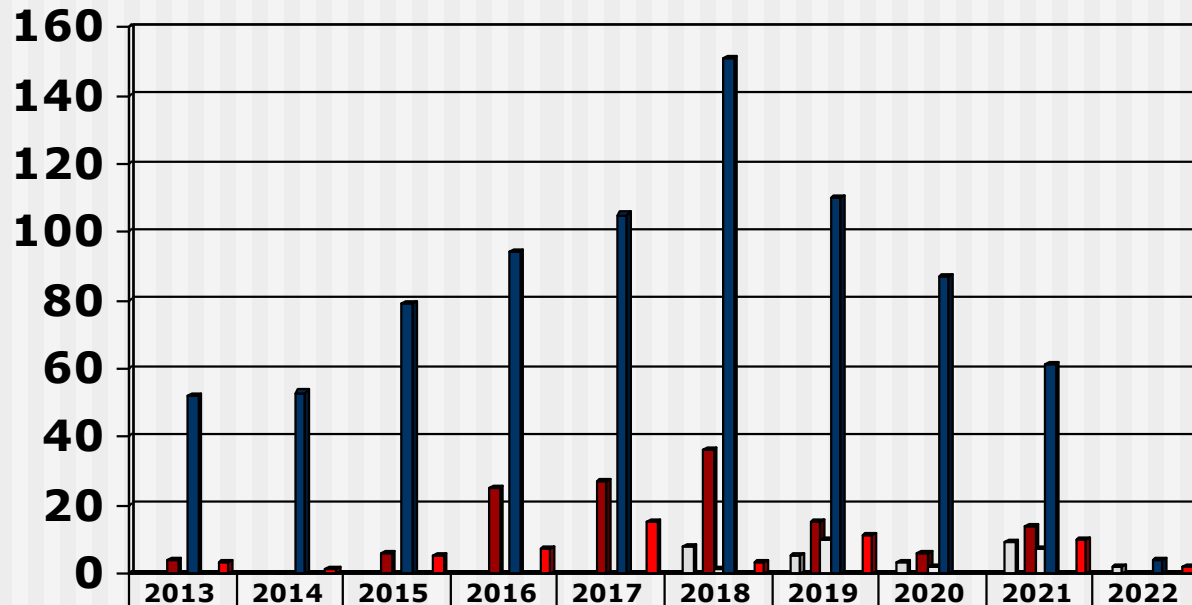
Output Midwifery Programme (2013 - 2022) Public Institutions



Limpopo
 North West
 Mpumulanga
 Gauteng
 Free State

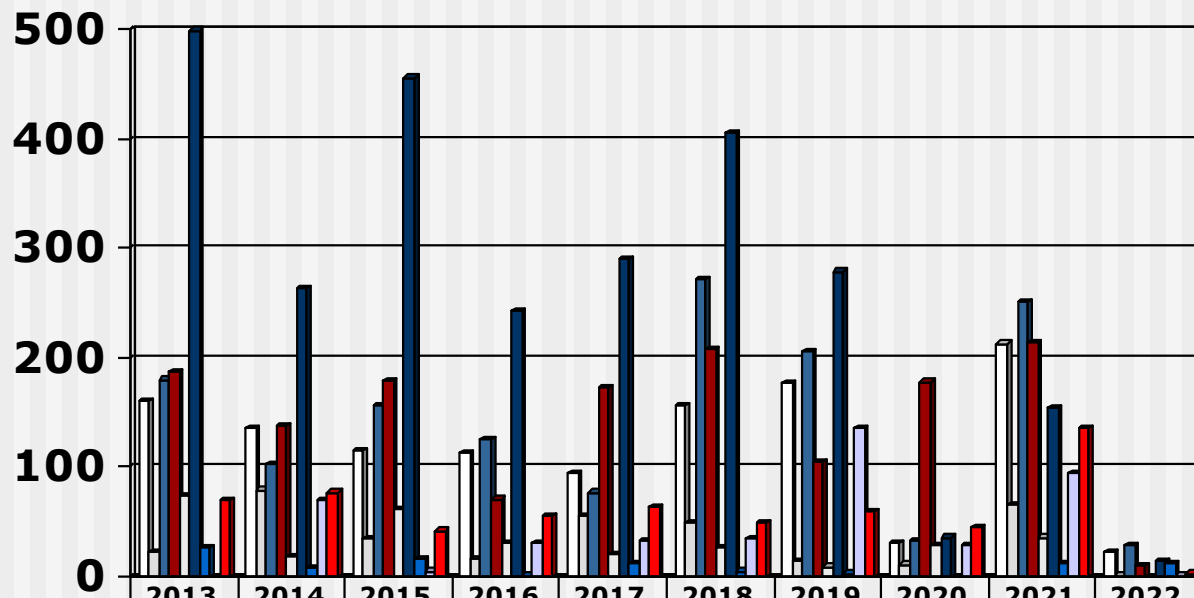
KwaZulu Natal
 Northern Cape
 Western Cape
 Eastern Cape

Output Midwifery Programme (2013 - 2022) Private Institutions



| | 2013 | 2014 | 2015 | 2016 | 2017 | 2018 | 2019 | 2020 | 2021 | 2022 |
|-----------------|------|------|------|------|------|------|------|------|------|------|
| □ Limpopo | | | | | | | | | | |
| □ North West | | | | | | 8 | 5 | 3 | 9 | 2 |
| ■ Mpumulanga | | | | | | | | | | |
| ■ Gauteng | 4 | 0 | 6 | 25 | 27 | 36 | 15 | 6 | 14 | |
| □ Free State | | | | | | 1 | 10 | 2 | 7 | |
| ■ KwaZulu Natal | 52 | 53 | 79 | 94 | 105 | 151 | 110 | 87 | 61 | 4 |
| ■ Northern Cape | | | | | | | | | | |
| □ Western Cape | | | | | | | | | | |
| ■ Eastern Cape | 3 | 1 | 5 | 7 | 15 | 3 | 11 | | 10 | 2 |

Output Midwifery Programme (2013 - 2022) Public Institutions



| | 2013 | 2014 | 2015 | 2016 | 2017 | 2018 | 2019 | 2020 | 2021 | 2022 |
|-----------------|------|------|------|------|------|------|------|------|------|------|
| □ Limpopo | 161 | 136 | 115 | 113 | 95 | 156 | 177 | 31 | 213 | 22 |
| □ North West | 22 | 79 | 35 | 17 | 55 | 50 | 14 | 11 | 65 | 1 |
| ■ Mpumulanga | 180 | 102 | 156 | 126 | 77 | 271 | 206 | 32 | 251 | 28 |
| ■ Gauteng | 187 | 138 | 179 | 71 | 173 | 207 | 105 | 178 | 214 | 10 |
| □ Free State | 74 | 18 | 61 | 30 | 20 | 27 | 9 | 29 | 36 | |
| ■ KwaZulu Natal | 499 | 263 | 456 | 242 | 291 | 405 | 279 | 36 | 154 | 14 |
| ■ Northern Cape | 26 | 8 | 16 | 1 | 13 | 5 | 3 | | 13 | 12 |
| □ Western Cape | | 70 | 5 | 31 | 32 | 35 | 135 | 29 | 95 | 1 |
| ■ Eastern Cape | 69 | 77 | 42 | 55 | 63 | 50 | 59 | 45 | 136 | 3 |