

SPEAKER/PANEL MEMBER BIOGRAPHIES

Prof SE Duma

5



Professor Sinegugu Duma holds a Doctor of Philosophy from the University of Cape Town, a Masters Degree in Nursing Education from UKZN and a BA Cur in Nursing Education and Nursing Administration obtained from UNISA as well as a Diploma in Nursing (General, Psychiatric, Community Health) and Midwifery from the Natal College of Nursing. She also has a Certificate in Sexual Assault Forensic Nursing obtained from Johns Hopkins School of Nursing, USA. She is currently serving as a member of the 16th South African Nursing Council (SANC), where she is the Chairperson of the Education Committee. Prof Duma has been involved in the service of educating Nurses and other health professionals since 1995 both nationally

and internationally. She has held different academic leadership positions in various national universities. She is currently serving as the Dean of Teaching and Learning, College of Health Sciences, University of KwaZulu-Natal since April 2017.

SOUTH AFRICAN NURSING COUNCIL

Governance of the Nursing Education Institutions (NEIs) in South Africa

**Professor Sinegugu Duma,
SANC NURSING INDABA, 18-19 May 2023, BIRCHWOOD
HOTEL**



South African Nursing Council
Regulating nursing, advocating for the public

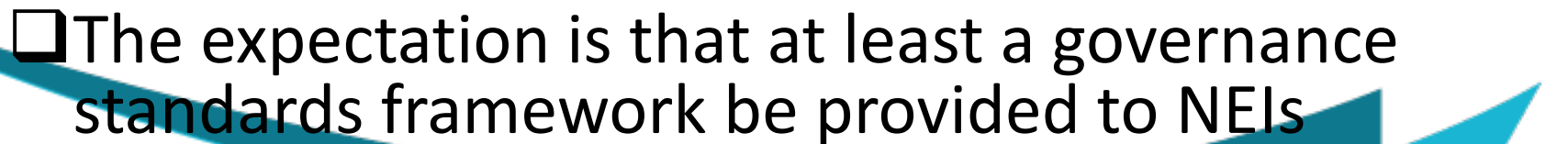
Disclaimer

- Complexity of the audience
- Positionality and experience
- NEIs as public and private entities
- Accommodate diversities/varieties in the governance structures of the NEIs.

Commonality: Higher Education Act 101 of 1997 and Nursing Act 33 of 2005




Introduction

- ❑ The success (attaining and retaining the accreditation status) of any NEI depends, on accountable and effective governance and sound management practices of the academic processes
 - ❑ Failure to have an effective governance structure can lead to the de- accreditation of the NEI
 - ❑ The expectation is that at least a governance standards framework be provided to NEIs
- 



Introduction

- Nursing education policy reforms
 - The complexity of nursing education institutions in SA
 - Dual regulation of NEIs as by Nursing Act 33 of 2005 and Higher Education Act 101 of 1997
 - Internationally, the WHO calls for regulations to ensure autonomy and accountability, and collaboration between the Ministry of Health and Ministry of Education
- 

Governance of NEIs



- ☐ Governance is a system by which the NEI is directed and controlled
- ☐ It is concerned with systems, controls, authority, accountabilities and decision-making at the highest level of the Nursing Education Institution
- ☐ It is about the structure and processes for effective monitoring and legal compliance

NEI in SA

PRIVATE NEIs

PUBLIC NEIs

Single campus private schools

Single public nursing colleges

**Higher
education
Act
Nursing Act**

Multiple/ decentralized campuses and sub-campuses

Multiple/ decentralized campuses

**CHE &
SANC**

Individual Ownership/
Hospital Group
Ownership

Schools/Divisions/
Departments of nursing
within universities

Provincial Department of
Health/ University

The Legal Framework Guiding Governance of NEIs

The Higher Education Act (Act No. 101 of 1997) as amended

The Nursing Act (Act No. 33 of 2005)

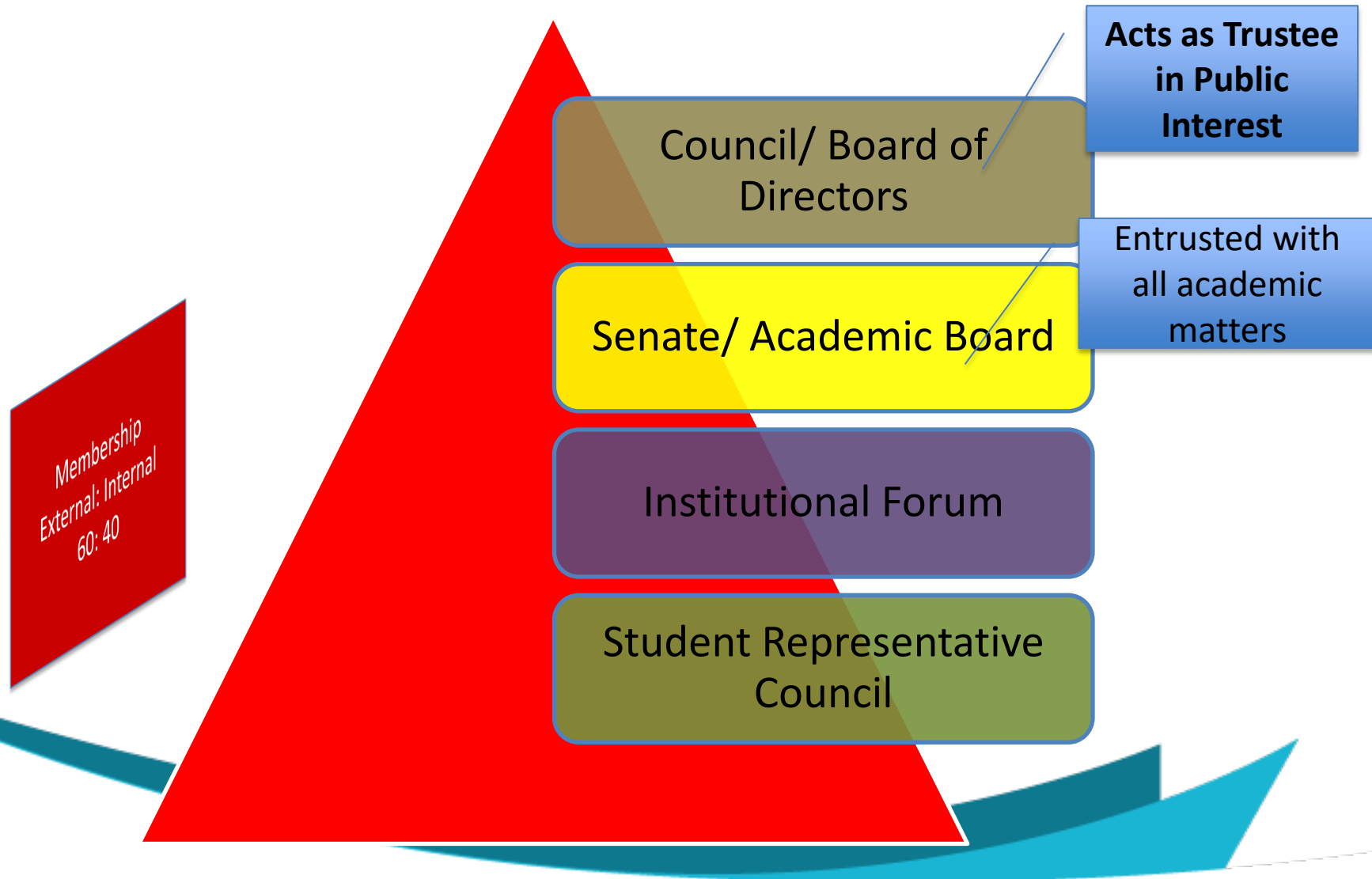
Government Notice No 377 of 27 March 2002: Standard Institutional Statute.

Higher Education and Training: Regulations for the registration of Private Higher Education Institutions, Government Notice No. R. 383 of 31 March 2016

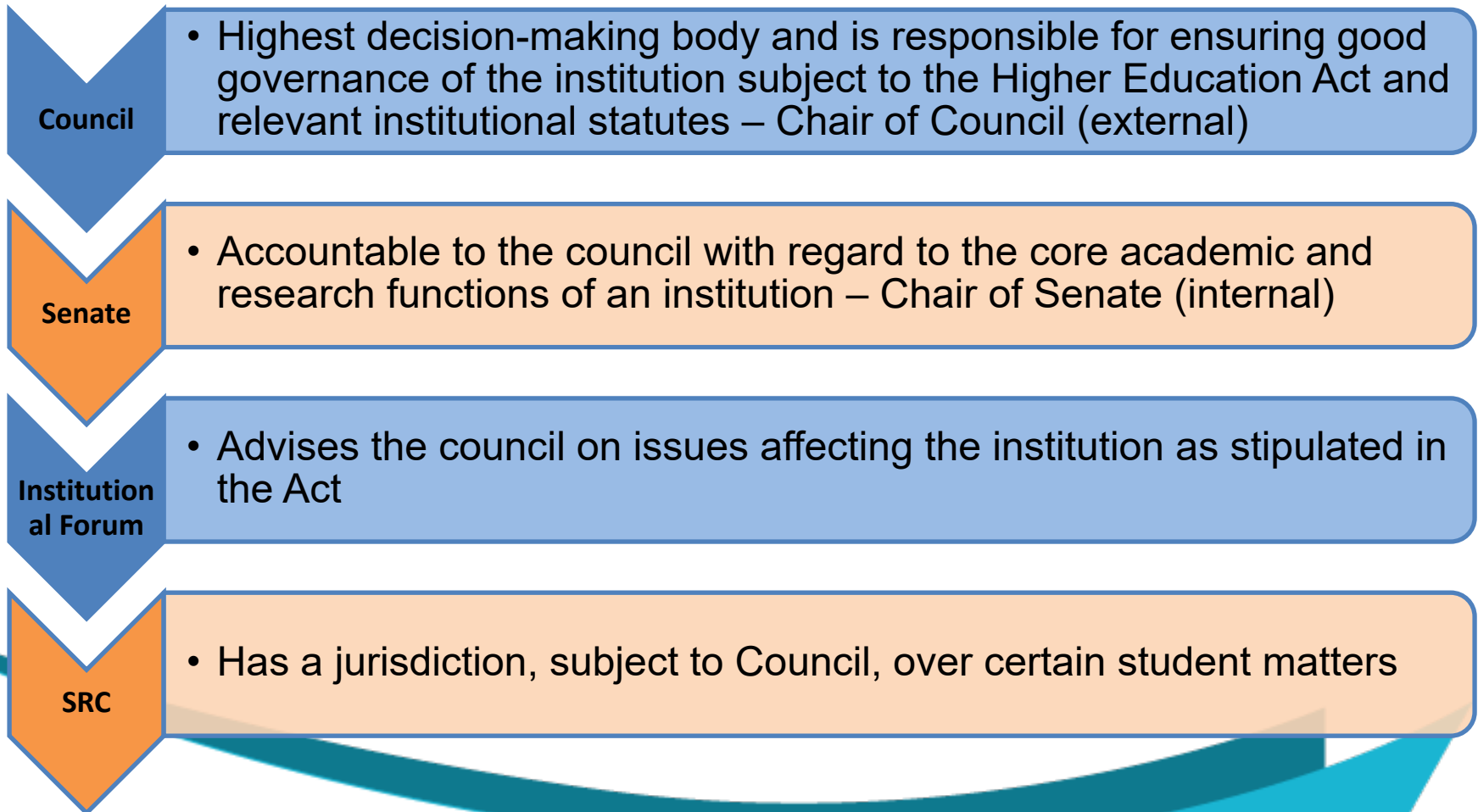
The SA Constitution and the Public Entities Act and is held to best practice of the King Report

Regulations relating to the accreditation of Institutions as Nursing Education Institutions (Government Notice No. R 173 of 08. March 2013) and any other relevant regulations

Governance Structure of the NEI



Governance Structure of the NEI



Functions of the Institutional Council in governing the NEI

- ☐ Makes rules for the institution;
- ☐ Establishes the council committees and determines the composition and functions of each committee
- ☐ In consultation with the senate, establishes joint committees of the council and the senate to perform functions which are common to the council and the senate
- ☐ appoints all Senior employees of the institution, after consultation with the senate
- ☐ Determines the student admission policy of the institution, after consultation with the senate
- ☐ determines, with the approval of the senate, the entrance requirements in programmes, enrolment number of students and the minimum requirements for readmission to study at the institution
- ☐ determines, and provides, with approval of the senate, student support services after consultation with the SRC

Main Principle: Consultation with Senate, SRC and other stakeholders


Functions of Council in governing the NEI

COUNCIL


- Responsible for the good order and governance of institutions
- Responsible for mission, financial policy, performance, quality and reputation
- Accountable to Minister
- **Not involved in the day-to-day management of the NEI**

- SENATE
- Responsible for all matters that are core to the purpose of the NEI
- Accountable to the council for the academic and research functions of the NEI
- Perform functions as may be delegated or assigned to it by the council
- **Head of NEI – responsible for day to day Management**


Challenges in Governance of NEIs

- ❑ Institutional council's interference on nursing education matters –versus Nurse as Head of Nursing Education (SANC R173)
 - Enrolment Plans vs SANC approved numbers per clinical placement rules
 - Appointment of HODs not meeting SANC requirements
- 
- A decorative graphic consisting of a thick, curved blue line that starts from the left side of the slide and sweeps upwards towards the right, ending near the bottom right corner.

The role of the Head of NEI –SANC Perspective

- ❑ The South African Nursing Council (SANC), is a statutory body which functions in terms of the Nursing Act, 2005 (Act No. 33 of 2005). It has a responsibility to establish, monitor, improve, and control conditions, standards and quality of Nursing and Midwifery Education and Training within the ambit of any other applicable law.
 - ❑ To this effect: SANC has the following as one of its objects:
 - ✓ *Establish, improve and control conditions, standards and quality of nursing education and training within the ambit of this Act and any other applicable laws*
 - ❑ It has a special agreement with CHE in terms of sharing this responsibility for governance of NEIs within the Higher Education System, in addition to other applicable laws in higher education
- 

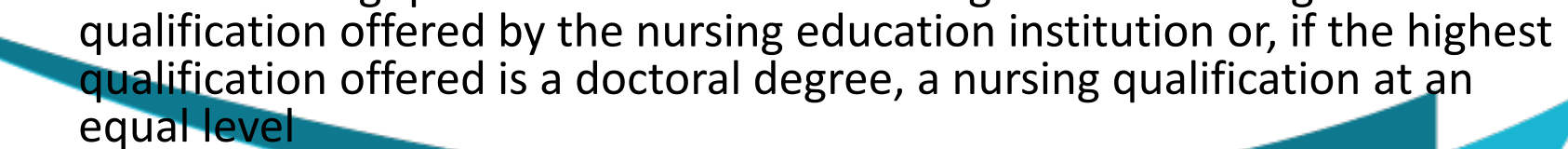
The role of the Head of NEI –SANC Perspective

- ❑ SANC recognizes the variety of Nursing Educations in SA, but still maintains that the person responsible for all SANC related nursing education matters is the Nurse in Charge of the NEI either as a unit within the University/ College/ School/ Hospital Board
- 
- A decorative graphic element consisting of a thick, dark blue curved line that starts on the left, dips down, and then rises towards the right, ending in a sharp upward-pointing arrowhead. A lighter blue curved line follows a similar path just below it.

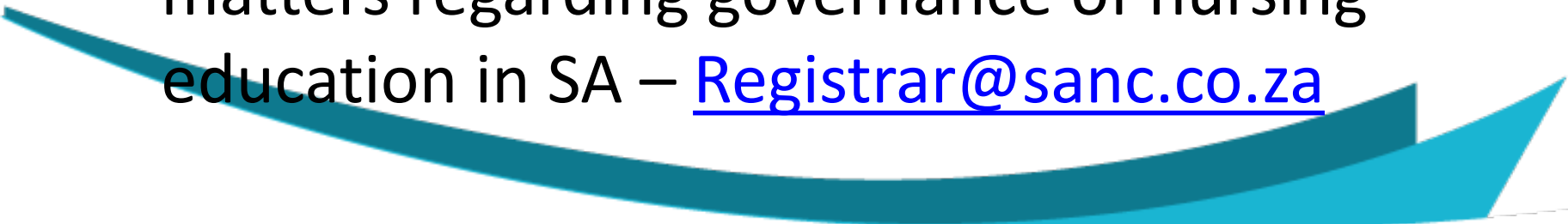


R173- Conditions and Requirements for Accreditation of an Institution as a Nursing Education Institution


(1) An institution may be accredited as a nursing education institution if—it has a designated person **in charge of the nursing education and training institution who—**

- is registered with the Council as a professional nurse
 - has an additional ***qualification in nursing education***
 - is in possession of a ***management qualification***
 - holds at least a bachelor's degree in nursing
 - holds a nursing qualification that is a level higher than the highest qualification offered by the nursing education institution or, if the highest qualification offered is a doctoral degree, a nursing qualification at an equal level
- 

Conclusion

- ❑ Governance of nursing education is complex – many statutes (institutional, National and international level)
 - ❑ Custodians of the Nursing Act what it stands for
 - ❑ When in doubt, please contact SANC on matters regarding governance of nursing education in SA – Registrar@sanc.co.za
- 
- A decorative blue curved line that starts from the left side of the slide, curves upwards and then downwards, ending on the right side. It has a gradient from a darker blue to a lighter blue.

List of sources

- Department of Higher Education and Training, 2017. Guidelines for good governance practice and governance indicators for councils of south African public higher education institutions. Pretoria, <http://www.dhet.gov.za>
 - Murdoch, N. The State of Governance in Private Higher Education in South Africa: An Interpretative Phenomenological Analysis. PhD Thesis. University of Liverpool.
 - Relevant Acts as indicated
- 
- A decorative graphic consisting of a thick, dark blue curved line that starts on the left, dips down, and then rises towards the right, ending in a sharp upward-pointing triangle. A lighter blue curved line follows a similar path just below it.